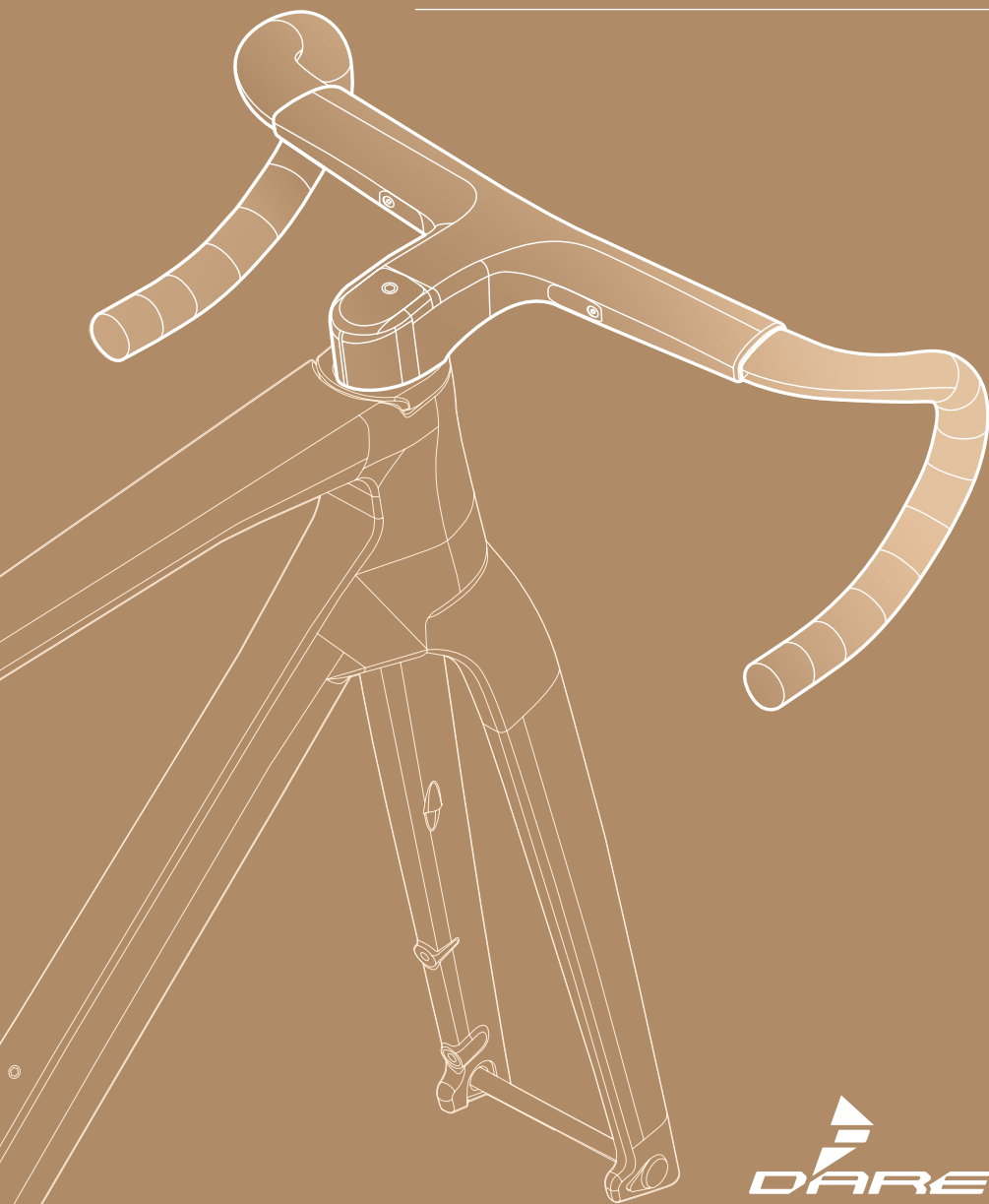


AERO1v COCKPIT ASSEMBLY MANUAL



INSTRUCTIONAL SYMBOLS

This manual uses the symbols below to bring your attention to information and warnings regarding maintenance and assembly. Please carefully read and follow the instructions provided, this will ensure correct installation and use of parts and prevent potential hazards.

Safety Instructions

Warning
Potentially dangerous, could cause serious harm or fatalities if not avoided.

Caution
Potentially dangerous, could cause minor to moderate harm if not avoided.

Notice
Assembly tips or cautionary advice, will not cause injury but could result in broken parts.

* Warning symbols mean that if the situation is not properly handled, it could result in accident or injury. Even if this manual does not specifically mention fatalities, the risk is always present.

Wrench Sizes and Torque Specs

4
10 Nm
Allen key size
If a diagram specifies an Nm value, that means a torque wrench must be used to ensure the correct torque is applied (for example, the diagram may specify to use a 4mm Allen wrench at 10Nm)

Assembly Compounds

G
Greasel
Prevents abnormal sounds

C
Carbon paste
Increases surface friction and prevents abnormal sounds

L
Loctite
Locks screw threads (prevents loosening)

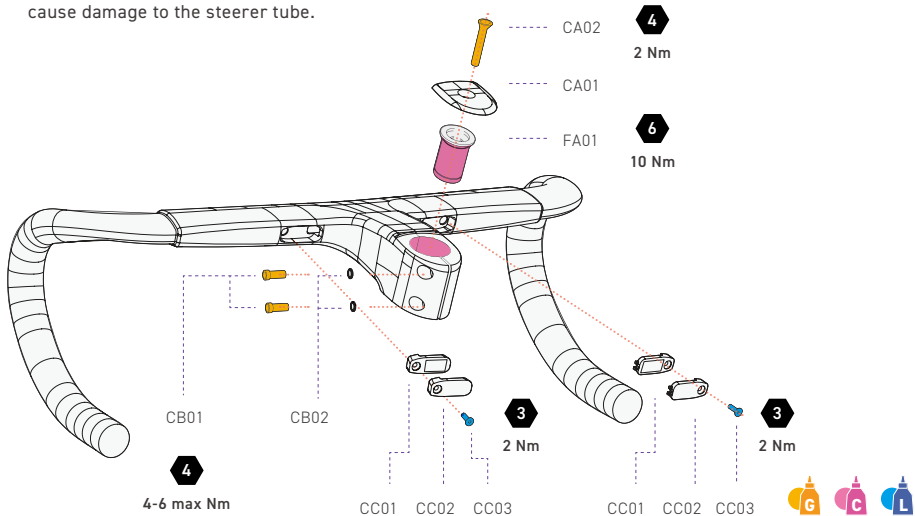
ASSEMBLY INFORMATION

1 Installing the AERO1v Integrated Handlebars

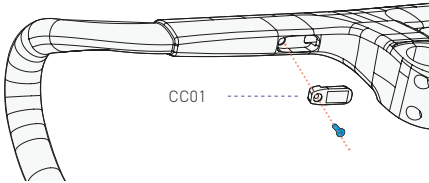
AERO1v integrated handlebars designed as a harmonic blend of aerodynamics and weight at their best performance. With 21 sizes available to choose from, even including Reach 80 and Reach 68 options, every rider can find their perfect match.

! The [CA02] stem flat screw we recommend tightening to 2Nm, over-tightening may cause restricted steering.

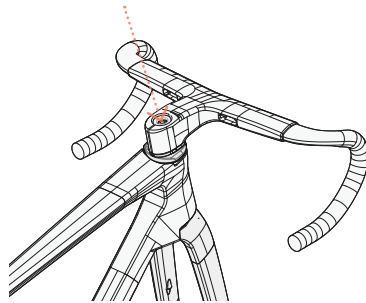
! Do not tighten the [CB01] stem socket screw above 4-6Nm, we recommend tightening the top and bottom screws to matching torques, over-tightening may cause damage to the steerer tube.



No.	Item Name	Qty	No.	Item Name	Qty
CA01	Stem top cap	1	CC01	Di2 satellite shifter mount (SW-RS801-T)	2
CA02	Stem flat screw M6 * 35 * 31.5 mm	1	CC02	Di2 satellite shifter cover	2
CB01	Stem socket screw M5 * 17 * 12 mm	2	CC03	Flat screw M3 * 10 * 8 mm	2
CB02	1mm spacer	2	FA01	Plug expander	1

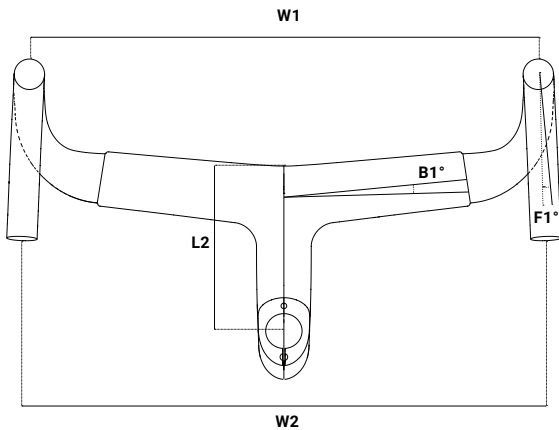


i AER01v includes space for installing Shimano Di2 satellite shifters (SW-RS801-T), if you would like to install these shifters please attach the Di2 satellite shifter mount at 2Nm.

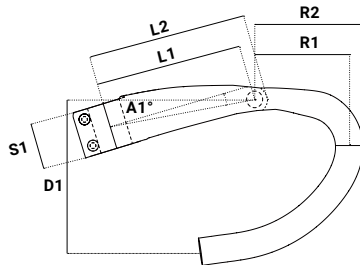


! The plug expander must be tightened to the specified torque only after the stem has been installed, in order to avoid over-expansion.

Geometry Code



i These handlebars only accommodate electronic shifting.



i Please pay special attention when measuring L1.

AER01v Geometry

Size (mm)	36	38	40	42
W1 Hood-to-hood	360	380	400	420
W2 Drop-to-drop	372	392	412	432
R1 Reach	80	80	80	80
R2 Reach	92	92	92	92
D1 Drop	134	134	134	134
F1 Drop flare	2	2	2	2
B1 Backsweep	-5	-5	-5	-5
A1 Angle	-6	-6	-6	-6
S1 Stack	41	41	41	41
L1 Stem length*	80 · 90 · 105 · 120	80 · 90 · 105 · 120	90 · 105 · 120 · 130	90 · 105 · 120 · 130
L2 Stem length	87 · 97 · 112 · 127	87 · 97 · 112 · 127	97 · 112 · 127 · 137	97 · 112 · 127 · 137

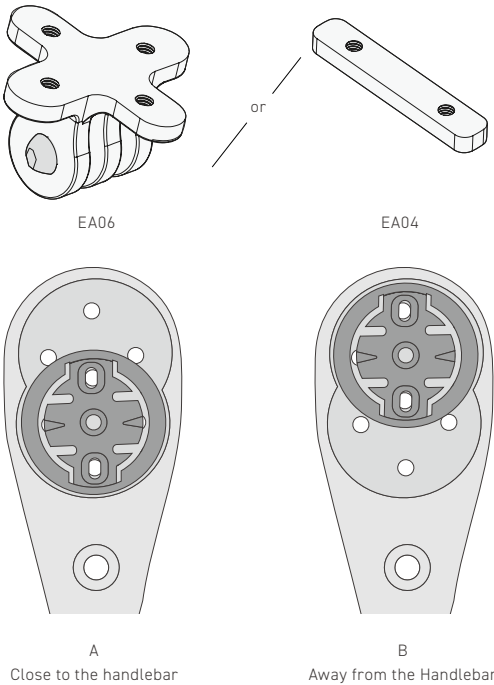
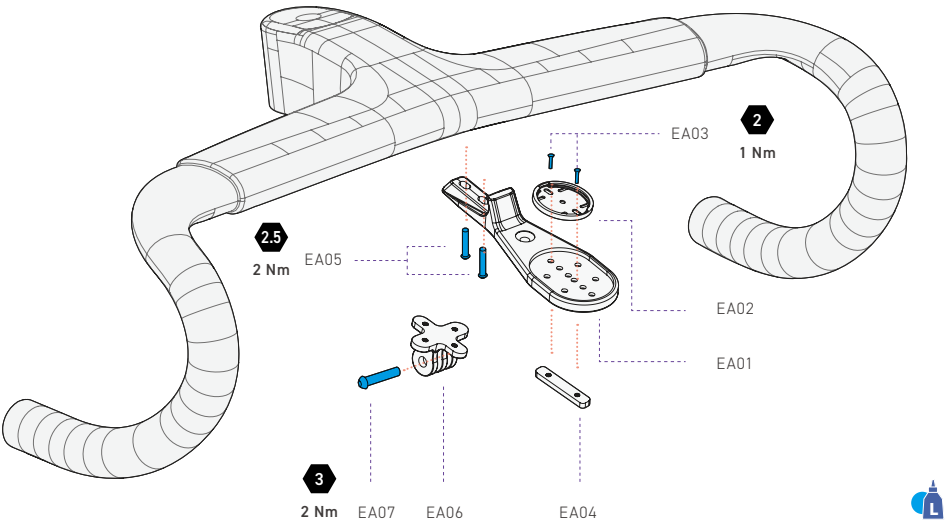
AER01v R68 Geometry

Size (mm)	36	38
W1 Hood-to-hood	360	380
W2 Drop-to-drop	372	392
R1 Reach	68	68
R2 Reach	79	79
D1 Drop	134	134
F1 Drop flare	2	2
B1 Backsweep	-5	-5
A1 Angle	-6	-6
S1 Stack	41	41
L1 Stem length*	105 · 120 · 130	105 · 120
L2 Stem length	112 · 127 · 137	112 · 127

* L1 stem length = the center of the stem clamp to the center of the handlebar tube at the front, or L2 minus 7mm.

2 Installing Mounts on the AER01v Integrated Handlebars

AER01v comes standard with a screw-on PA-6 computer mount (a carbon fiber version is available at additional cost), and is compatible with Garmin/Wahoo/Bryton computers as well as GoPro cameras and lights.



Step 7.1 The [EA02] computer mount adapter is for Garmin systems. Wahoo and Bryton systems are available for purchase as well.

7.2 The [EA06] bottom mount adapter fits GoPro cameras or lights, or can also be switched out for [EA04] an adapter mount.

7.3 There are two positions to attach the computer depending on its size:
A: Closer to the handlebars
B: Farther away from the handlebars (suitable for larger computers such as the GARMIN 1050)

7.4 A carbon fiber mount is available at additional cost, please contact DARE or your local authorized DARE retailer if you would like to purchase this version.



More computer mounts accessories

No.	Item Name	Qty	No.	Item Name	Qty
EA01	AER01v computer mount	1	EA05	Computer mount socket screw M4 * 18 * 14 mm	2
EA02	Computer mount adapter	1	EA06	GoPro mount adapter	1
EA03	Adapter flat screw M3 * 8 * 5 mm	2	EA07	GoPro mount round screw M5 * 23 * 20 mm	1
EA04	Adapter mount	1			

i AER01v's standard computer mount may have a slightly different configuration depending on your purchase date, if you need a specific version please contact your local authorized DARE retailer before purchasing.

! Please be sure to attach your computer's safety lanyard onto the handlebars, this will help minimize damage to the computer in case of a collision or accident.





2025 V1 | DESIGNED AND EDITED BY DARE BIKES

COPYRIGHT ©2025 DARE BIKES. ALL RIGHTS RESERVED.